

# BEAUTIFUL SUZUKI

Wig Tutorial



# BACKGROUND

## Learning from mistakes

### 2012 - FALLING APART

When I originally styled the Beautiful Suzuki's wig in 2012, I flipped the wig upside down, sprayed it with a ton of Got2Be freeze spray, and hoped for the best.

Unfortunately, the look didn't last the entire weekend and I knew that I would need to change tactics.

### 2014 - WIG V2.0

I went with the same strategy in 2017 - flipping upside down and using Got2Be, but this tutorial will cover how I prepped my wig and adjusted my technique.

## MATERIALS

- 1 wig (Malinda from Arda Wigs)
- Wig shampoo for synthetic wigs
- Tub or bucket
- Got2Be free spray, hairspray
- Hair dryer



## 01 WASHING

Cleaning a styled wig

## 02 STYLING

Upside down in the shower

## 03 TESTING

Stress tests and repairs

# 01 WASHING THE WIG

SORRY FOR LACK OF PHOTOS

Fill the large tub with warm water and let the wig soak for about 10-15 minutes. This was long enough for the Got2Be to start breaking down.

Gently run your fingers through the existing styling (in my case - the spikes) to remove a bunch of the glue.

Replace the water in the tub. Follow instructions on the shampoo container to measure out the correct amount of shampoo and to mix it into the water.

Submerge the wig for the amount of time specified on the shampoo container. In my case, it was 10 minutes.

Gently run your fingers through the wig until the Got2Be glue is fully out of the wig.

You may need to replace the water and re-shampoo several times depending on how much glue was in the wig originally.

Put your wig on a stand to dry. Keep in mind that fibers may crimp in the position you let them dry in, so make sure the fibers are arranged neatly.





# 02 STYLING THE WIG

FLIP THAT WIG UPSIDE DOWN!

I did not have enough spare time to style this wig all in one go; I inverted my wig so that I could spray a little at a time and let gravity do most of the work while the glue dried.

Pin the wig firmly onto the wig head.

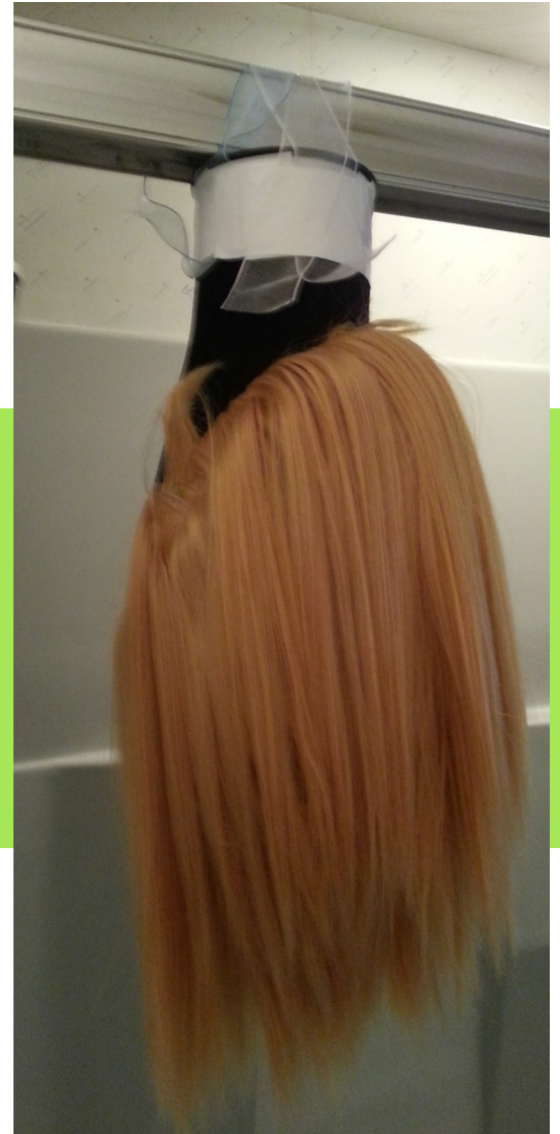
Attach some sort of ribbon, rope, or tape to the neck of the wig head. Secure in place with something strong like duct tape.

Fix the wig head onto a railing like a shower stall frame or shower curtain rod.

Break the wig into very thin, very small sections. If sections are too big, the risk of a spike or chunk of hair coming loose increases.

You're not making wig spikes as much as building a giant glued web, one thin weft at a time. The web distributes the stress to all the fibers.

Free a small circle of sections at the very top of the wig. This will form the core that the rest of the fibers will glue down on.





# 02 STYLING THE WIG (CONT)

## SPRAY SLOW AND CAREFULLY

When securing the sections in place:

- Use a comb to straighten fibers for setting and make sure nothing is caught on other fibers
- Keep the hairdryer on the lowest speed setting to prevent fibers from moving around too much; warm or cool temperature works
- Apply a little bit of hairspray to get the section into place and correct the position as needed.
- Then apply Got2Be Freeze Spray and blow with hairdryer until glue is completely dry.

Repeat these steps until all the sections are glued down.



1 had over 100 sections; I worked in a circular pattern, starting with the core sections and slowly working around to the outside. It took me over a week to get through all the fibers.

# 03 TESTING

## CHECK THAT FIBERS ARE SECURE

This wig was going to have to survive stage combat, dramatic death scenes, and multiple appearances over a single weekend.

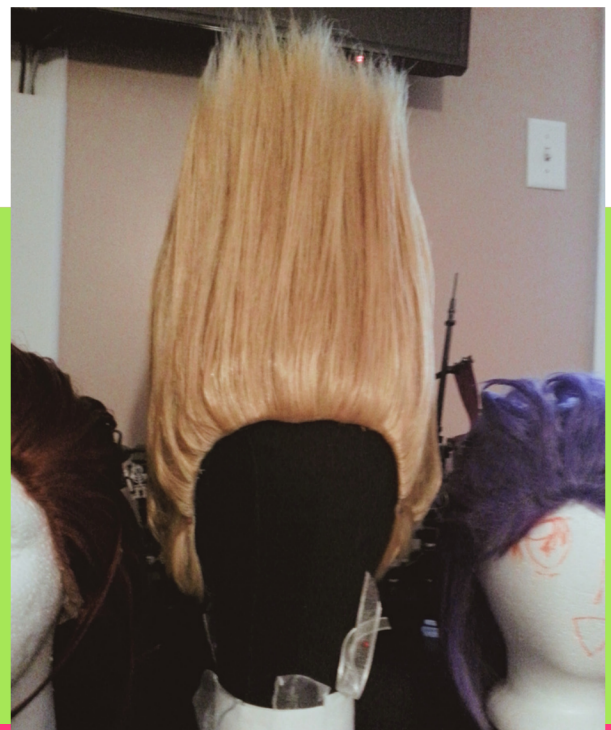
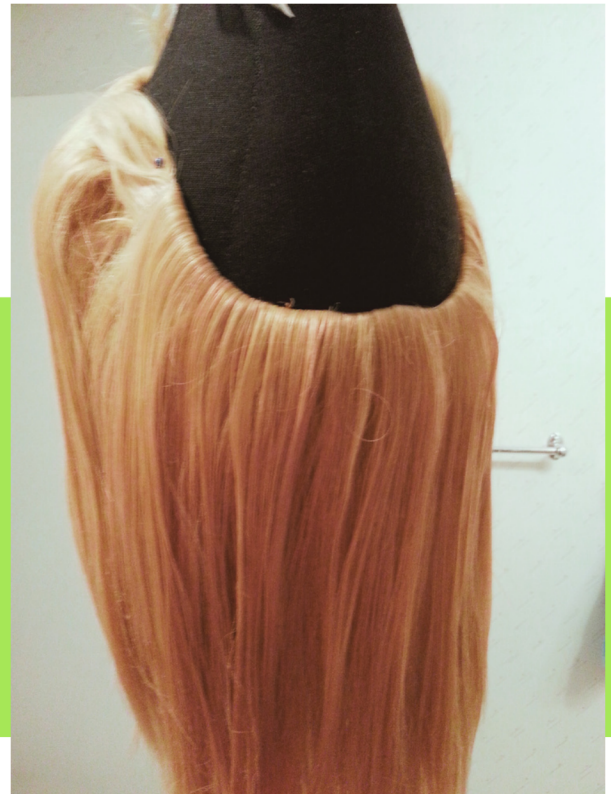
The first round of testing happened during styling. I periodically lifted the wig at severe angles and shook it around to make sure all the fibers held together.

I applied a lot of spray to the very ends of the fibers, which helped glue them together.

About 2 weeks before wearing at any convention, we do a dress rehearsal for performances to make sure the fibers are still holding strong.

## TIPS FOR WEARING

This type of wig can't use hairpins (due to helmet style) or wig tape/spirit gum (due to lack of lace front). To keep the wig secure we use wig grips over the wig cap and added a chin elastic for extra enthusiastic performances!



# 04 RESULT

## REUSING, REPAIRING, REWEARING



I purchased this wig in 2012, it was restyled once in 2014 and has survived multiple convention appearances since then!

My husband finds Suzuki tiring to wear, but if the right opportunity shows up, he's said he'll bring the rainbow king back. :)

