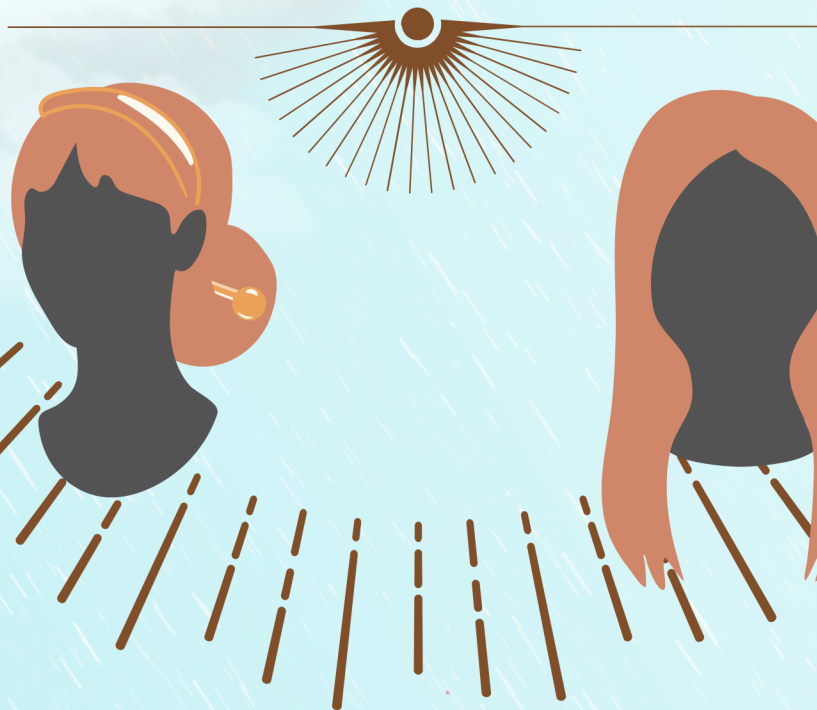


# Tutorial

## Quick Change Wig

Formal Updo to Daytime Look



Bigimotik Cosplay  
<https://bigimotikcosplay.com>



# Purpose

I wanted to have a stable “formal” look that could weather several hours of wear including photoshoots, but that could be transformed in a few seconds to a “daytime” look.



Photos by GhostGirl Productions

This tutorial will cover how I created a “tearaway” bun and braid to switch the hair in under 2 seconds for my onstage performance as Nike Lemercier from World is Still Beautiful.

# Approach & Materials

The crux of this effect is twisting a full length wig into a low bun and then securing with a bun cover, held in place with a hair pin.



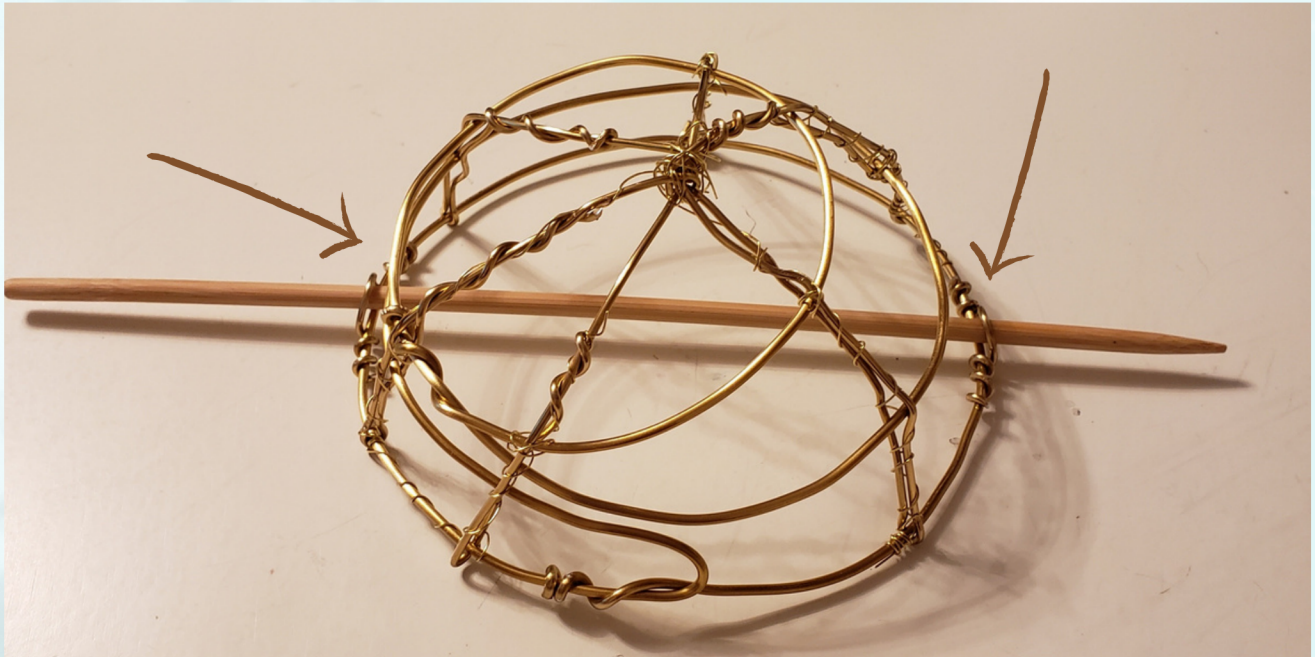
## Materials needed:

- 1 full length wig
- 3 packs of short wefts (~18")
- Scrap of felt, fleece, or batting
- Wire
- Wooden skewer or dowel, 1/4" diameter x 7-9" long
- Clear, tacky glue
- Clear hair elastics (mini)

Optional decoration: fishing line with beads

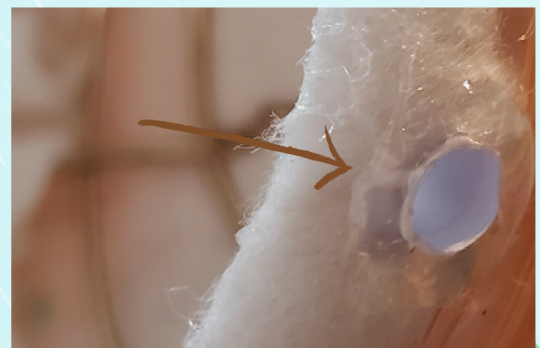
# Foundation

I created a wireframe in the shape of a half-orb out of leftover wire I had lying around the house. In the frame, I made sure there were (2) small holes for the skewer to slip through.



When I poked the holes through for the skewer, friction between the batting and the wood was causing the skewer to stick.

To get around this, I inserted small paper tubes through the batting holes so the skewer would slide easily.



Then I wrapped some leftover quilt batting over the wire frame to soften the shape and to give the wig fibers a base to stick to.

# Wig Fibers

Taking small chunks of a short weft pack from Arda, I laid the fibers down with tacky glue. Each segment was sealed on top with a thick layer of glue. I always brushed in the same direction to keep the fibers sleek and straight.



Once I had a layer of wig fibers, I let the bun dry and then added another layer. I repeated the process until I had around 5 layers glued.

The multiple layers were necessary for both smoothing out the remaining bumps from the underwire, but also to ensure full coverage so the batting was completely hidden.



I took part of the weft remnants to make a braid that I wrapped around the edges and glued down.

Once the fibers were dry, I poked holes through the braid for the skewer.

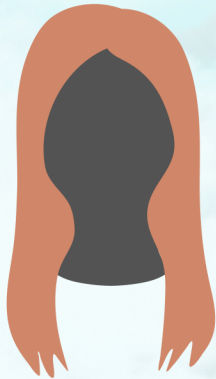
# Braid Headband

To complete the look, I made a separate headband with a braid. Unfortunately, I don't have a lot of work-in-progress pictures, but this is the process I followed:



1. Cut the weft fibers from the original weft pack.
2. Create the basic braid, securing with rubber bands or elastics.
3. Optional: string some beads on fishing line and weave through the braid.
4. Glue the braid down onto the headband.
5. Brush tacky glue on the top to secure fibers.
6. Wrap the ends with some fabric or thread to protect the ears from glued wig fibers.

# How to Transform



Put on the base wig.

Because this style will put a lot of weight towards the back of the wig and you want to make sure the base wig is secure for when the bun comes off, I recommend:

- Styling your own hair in a low bun that can serve as an anchor
- Using a netted wig cap to make it easier to use the hair pin
- Using wig grips, pins, and clips to secure the wig to your head



Leaving the bangs and fringe out, wrap the rest of the base wig hair into a low bun - in the position where you want the updo bun to land.

Use the bun cover to capture your wrapped bun and secure with the hair pin.

If possible, try to make sure the wig pin ALSO goes through your natural hair under the wig cap.

Put on the headband and you're good to go!

I recommend changing your outfit BEFORE letting the hair out of the bun cover to avoid long wig fibers getting in the way of your costume change.