



# Colossal Con East 2022 Craftsmanship Contest

Nike Lemercier, *World Still Beautiful*



Bigimotik Cosplay



# Princess Nike Lemercier, "World is Still Beautiful"

## Costume Overview

Nike Lemercier is forced to act like a lady, but is a free spirit underneath. This costume was designed with that duality in mind, including a transformation on stage as she (literally) sheds her princess-like image. This outfit combines references from both the anime and manga to bring the look to life.



## Techniques

- Wig cutting, styling, fiber work
- Jewelry: glue and metalwork
- 3D modeling, printing, and post-processing
- Painting: leather, plastic
- Fabric dyeing
- Patterning, draping
- Tailoring stretch/non-stretch, lining, finishing
- Metal: steel boning, grommet, busk
- Heat transfer: vector design, cut, application
- Rhinestones and beading

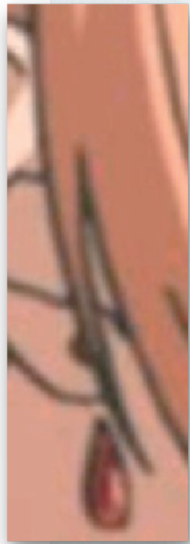
## Components

- Wig and hair pieces
- Earrings, gloves, and shoes
- Cape and pins
- Belt and tabards
- Skirt
- Petticoat
- Bodice
- Corset
- Bloomers
- Day dress

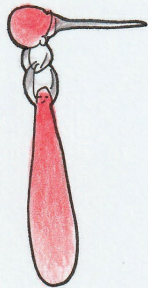


# Accessories

## Design and Reference



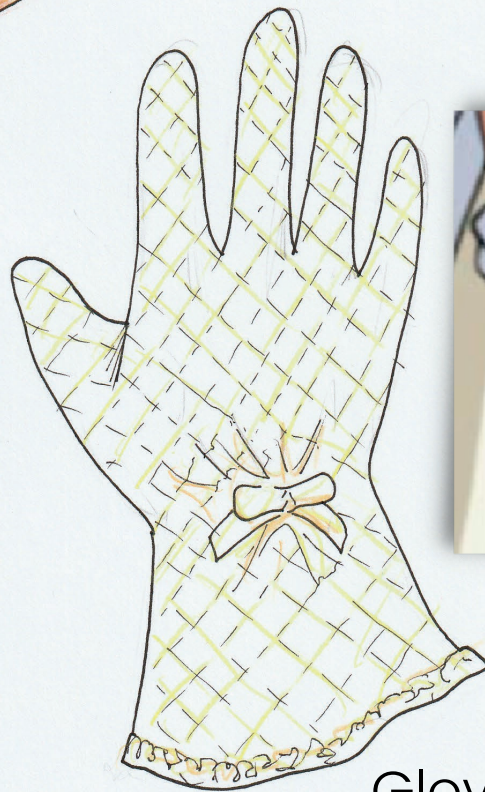
Earrings



Hair Pin  
(Original)



Shoes  
(Original)



Gloves



Wig and Hair Pieces



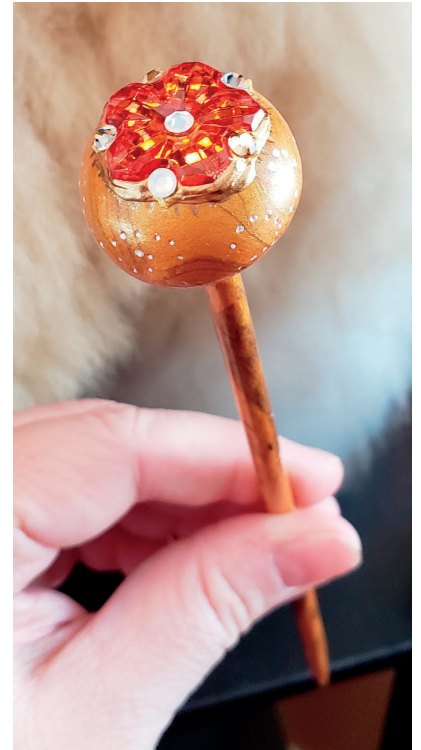
# Jewelry

## Earrings and Hair Pin

The earrings have a large stone suspended from a jump ring chain, attached to a stud with a separate garnet stone glued on.

Although a hair pin wasn't in the anime or manga designs, I needed a mechanism to hold the bun cover in place. The hair pin is an original design, incorporating Nike's primary colors of white, gold, with tiny red accents.

The pin is made of carved wood with a clay topper and a custom-colored flat-back gem.



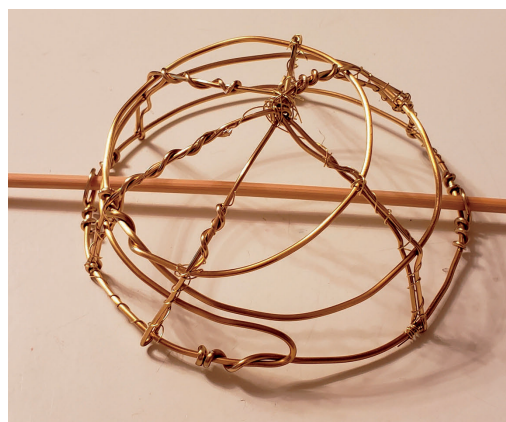
# Wig and Hair Pieces

Three looks: down, partial updo, full updo

This wig is designed to be worn (3) ways: down for casual wear, partially up for a manga-inspired look, and fully up for the anime style.

The base wig is an Arda Ferrari with heavily cut and styled bangs to be worn as-is. The braid is attached to a headband so it can be worn for either partial or full up-dos.

The hair can be rolled into a bun and held into place with a covered bun cage that was made with wire, extra wefts and a braid. The hair pin on the side is pulled out for an instantaneous release.



# Accessories

## Shoes and Gloves

The gloves use a 4-way stretch lace-like mesh to ensure they can be quickly removed onstage.

I changed the design to use a smaller ribbon that would not interfere with the stage effects I need to perform.

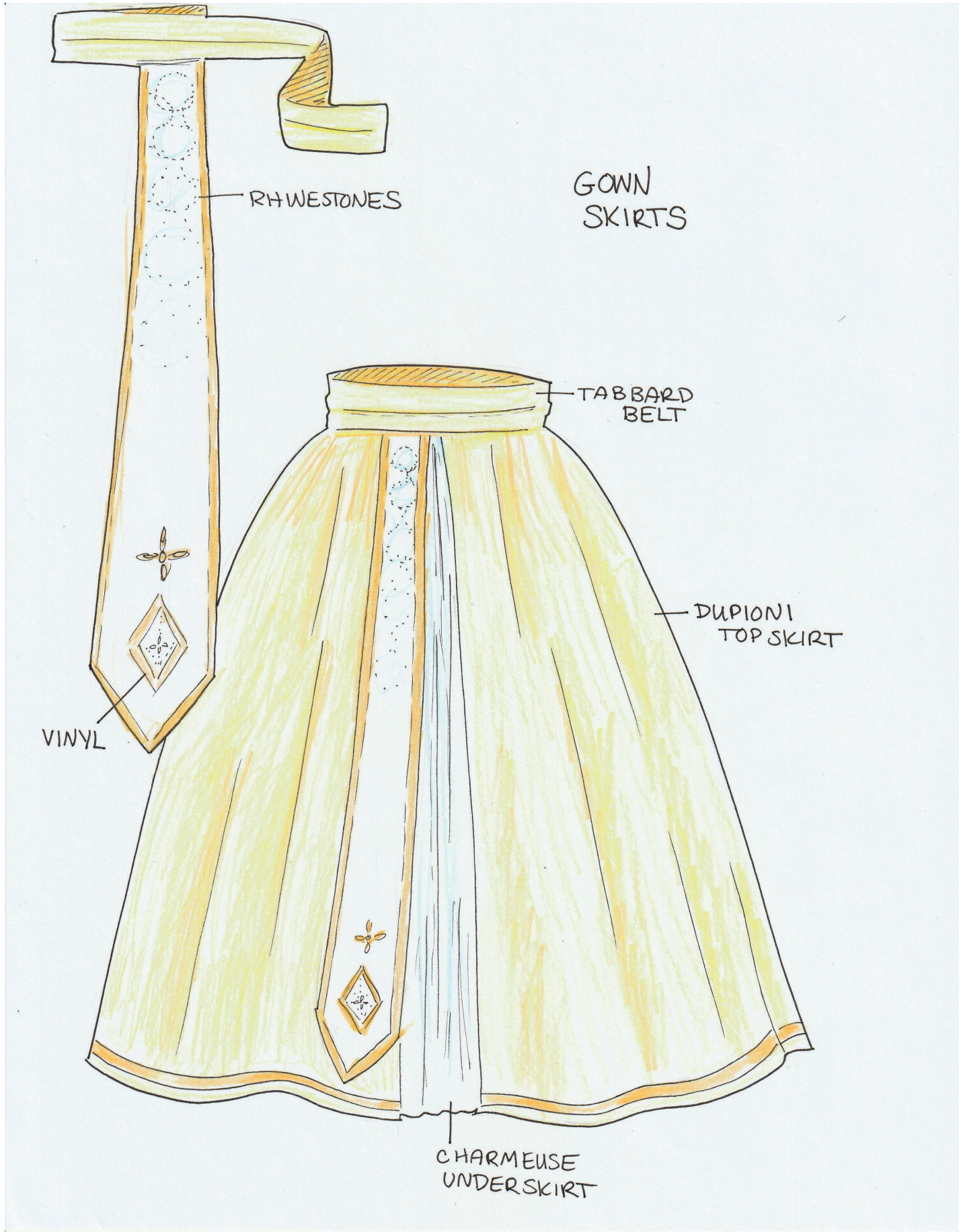
Nike's shoes are rarely shown when she is in her gowns, so I created a shoe of my own design, taking inspiration from 18th and 19th century heels, while adding a bit of a fantasy spin.

The leather was painted champagne and then various trims were layered on with glue, complete with velvet bows on the tops of the shoes.



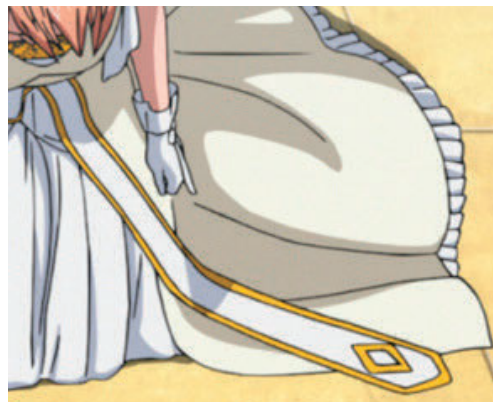
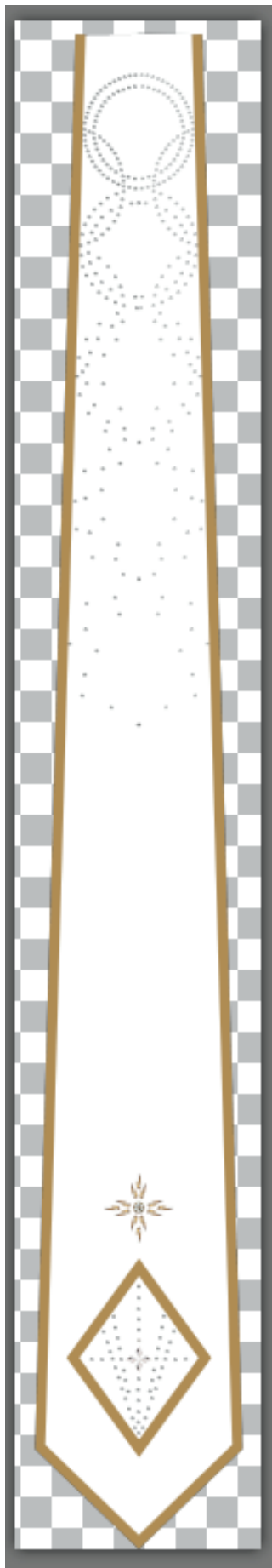
# Belt, Tabards, Skirt

Design and Reference



# Belt, Tabards, Skirt

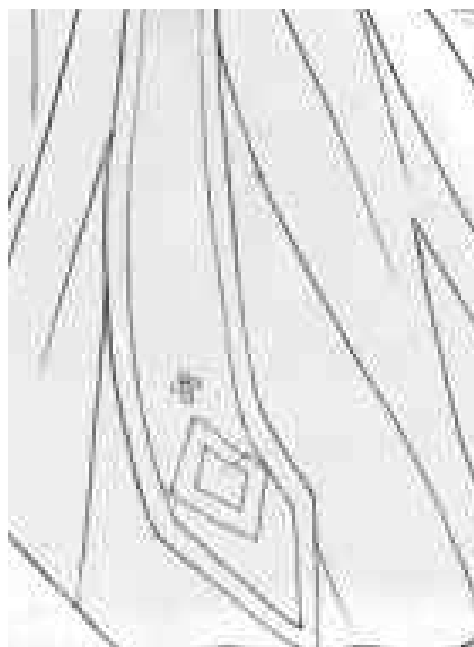
## Design and Reference



Coloring from the anime



Beading and detail patterns pulled from the manga



Skirt fullness is somewhere between a quasi-ball gown (above) and more empire/A-line (below)





## Belt, Tabards, Skirt

Satin tabards mounted on belt, combined 2-layer skirt

The skirt is a two-in-one with an over skirt made from dupioni and an underskirt from charmeuse. The two-in-one approach makes it easier to get out of onstage. For normal wear, a pair of heavy snaps keeps the skirt closed. For performance, the belt and bodice keep the skirt closed until the bodice tab is pulled.

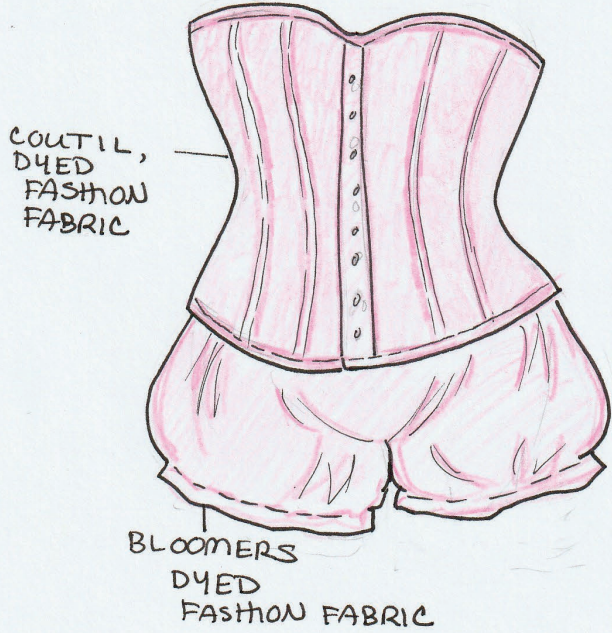


The tabards are mounted on a velcro-mounted belt and contain over 100 hot-fix rhinestones each, arranged in a pattern that combines the anime and manga references. The rhinestones were applied with transfer tape to make sure the design was consistent.

# Undergarments

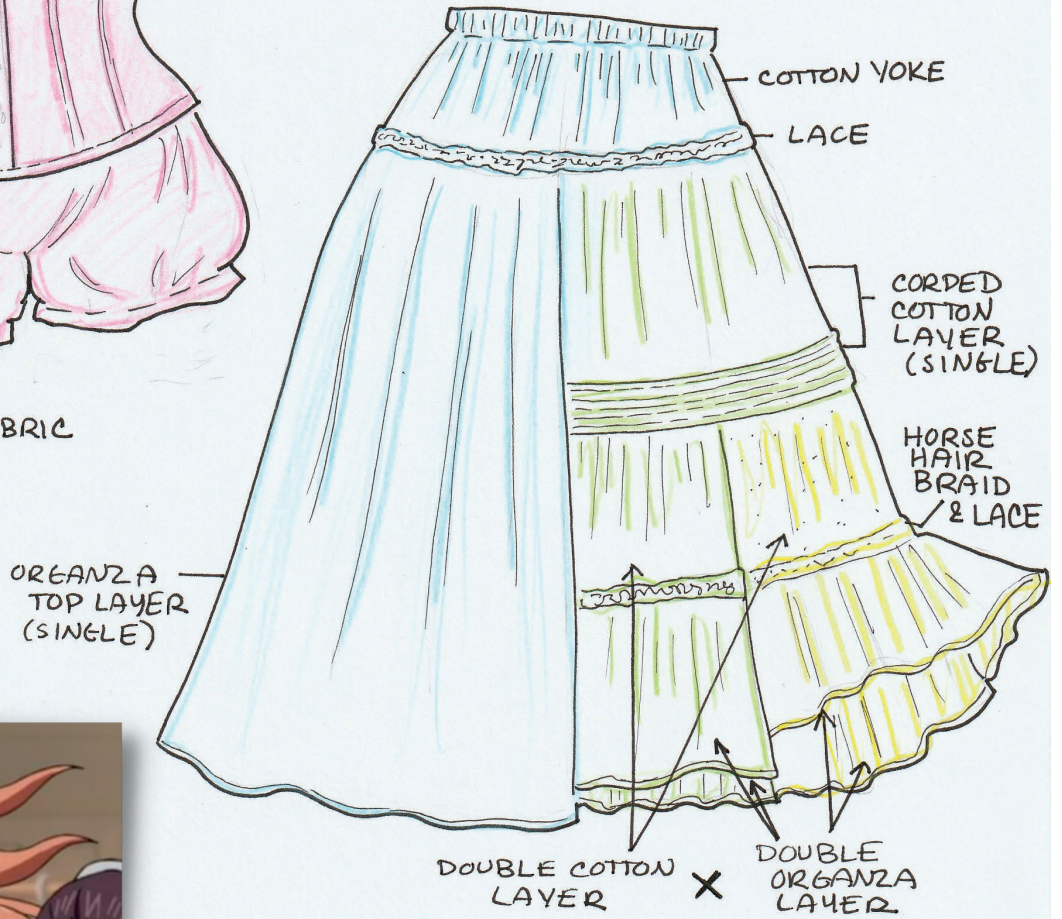
## Design and Reference

VICTORIAN OVERBUST CORSET



UNDER GARMENTS

MULTI-TIER PETTICOAT (WHITE)



Call on your womanly spirit!

# Undergarments

## Petticoat

The petticoat yolk is trimmed with lace and supports (2) layers:

- Floor length layer of organza
- 18" tier of cotton with 7 rows of cording

The corded layer supports (2) layers of cotton, edged with horsehair braid. Each of these layers supports (2) layers of organza (total of 4 organza layers).

There is a total of 40 yards of ribbon encasing the hemline.



# Undergarments

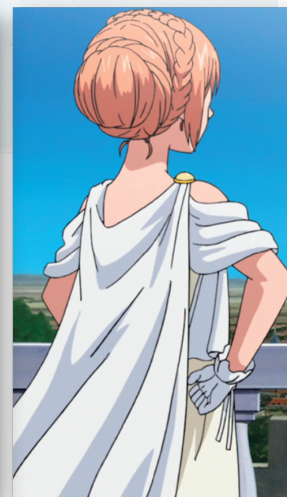
## Corset and Bloomers

The corset is a Victorian over bust pattern (Pattern Credit: Redthreaded), made from 1 layer of coutil and 1 layer of poly cotton. The corset poly cotton, the 100% cotton batiste for the chemise & bloomers, and the binding tape were all hand dyed the same pale pink, using (2) different formulas of dye: Rit Dye for cotton and Rit Dye More for synthetics.



# Bodice and Cape

## Reference and Design



# Bodice and Cape

## Silk Cape and Clip on Pins

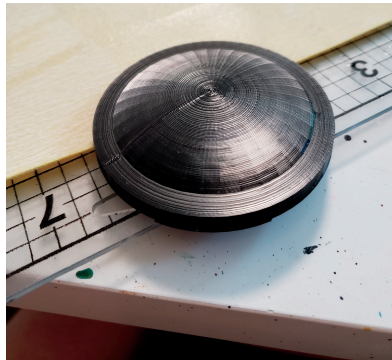


The cape is made of chiffon, with every edge in a rolled or narrow hem. It contains over 400 scattered rhinestones to help draw attention during onstage choreography.



Two pins attach the cape to the bodice. The pins were 3D modeled and printed by me, wet sanded, and then painted to look similar to the howlite gemstone. The edges are lined with rhinestones.

Each pin is attached to a strip that contains strong magnets. This ensures the cape stays in place while wearing, but also allows the performer to tear off the pins and easily remove the cape onstage without stressing the delicate chiffon.



# Bodice and Cape

## Stage Transformation Bodice

This bodice engineering is modeled after the Broadway Cinderella's bodice with "spider rigging" to pull apart for onstage transformations. The bodice back seam has boning and two sets of closures:

Normal wear uses the standard hook & eye strips to hold the bodice secure.



Performance wear uses the adapted eye strips that are threaded with fishing line and attached to the tab ring.

Pulling on the ring pulls out the line and the bodice opens from the back.

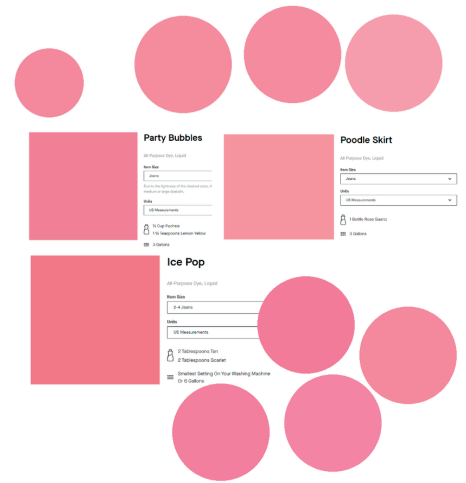
The front crosses and snaps on the sides to ensure I can get into the bodice without assistance.

The shoulders are ruched, the bodice is fully lined, and the modesty panel is snapped into the front closures. The modesty panel features heat transfer vinyl patterns made by made and hotfix rhinestones.



# Day Look

Casual dress for post-transformation



The simple day look dress is a single piece with a closure in the back. The stretch denim was custom-dyed to match the tones seen in the anime.





# Character and Action Shots

