

# INTRODUCTION

## **Star Guardian Lulu** Bigimotik Cosplay

June 27, 2020

*LCSx State Farm Cosplay Contest Entry*



# REFERENCE IMAGES



# FINAL PRODUCT IMAGES



# DETAILED BREAKDOWN - OVERVIEW

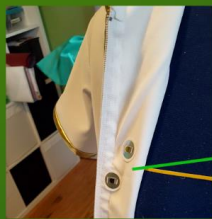
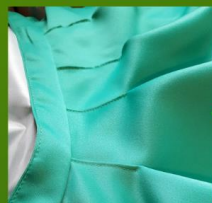
I almost exclusively play Lulu and I absolutely adore her Star Guardian Skin!

I wanted to capture that combination of 'space' and 'magic' through texture and design.

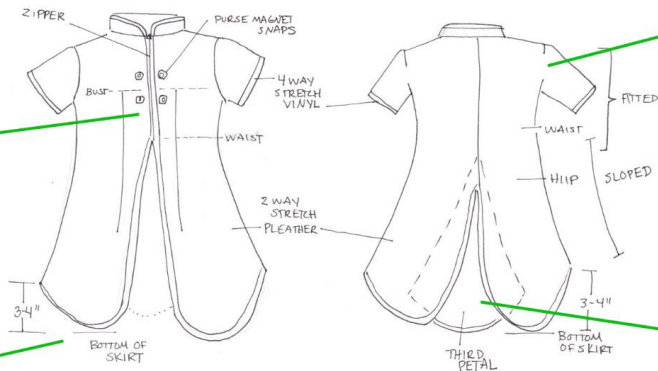
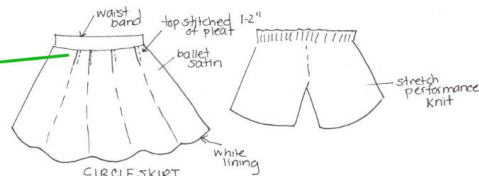
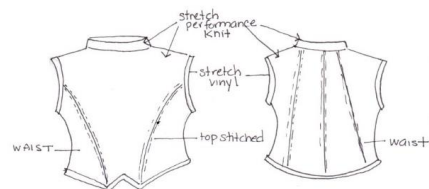
**Space:** vinyl trim, pleather coat and accessories, stretch knit shirt and shorts

**Magic:** ballet satin/taffeta skirt and petticoat, rhinestones galore, metallic trims on the skirt, petticoat, and jacket.

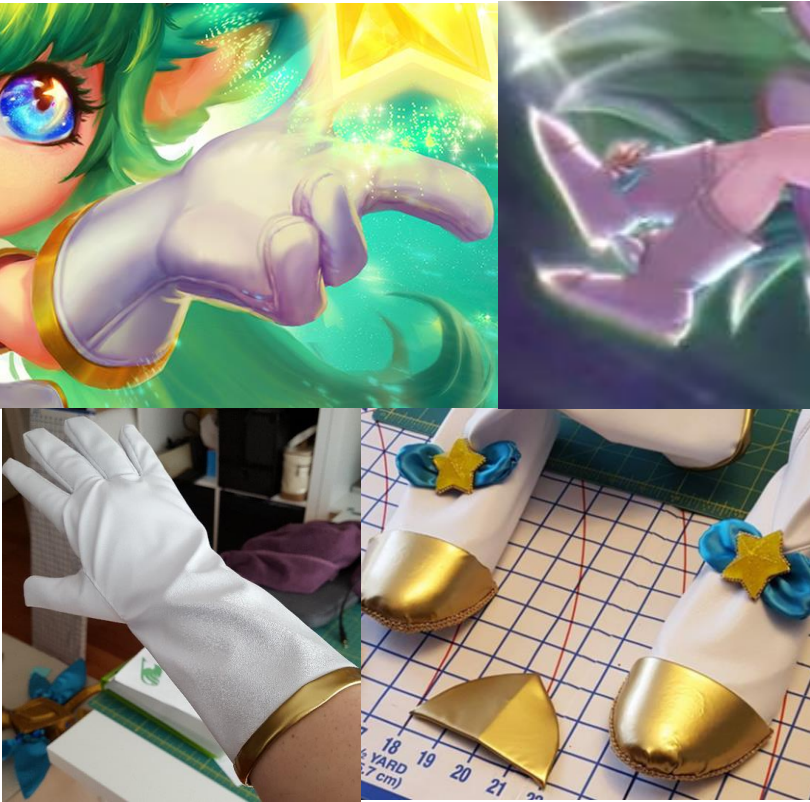
Every piece of the costume is made from scratch, including hand-drafted patterns.



## Star Guardian Lulu Costume Breakdown



# DETAILED BREAKDOWN – SHOES & GLOVES



Both are made with pleather and vinyl for a sleek feel; both are drafted from scratch and handstitched.

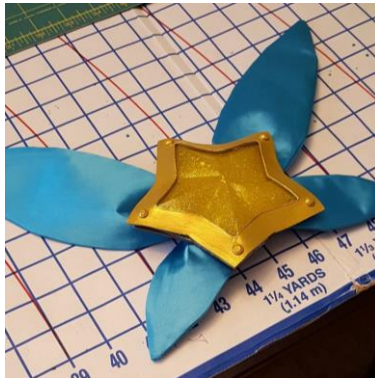
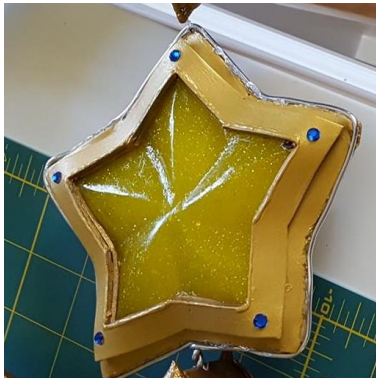
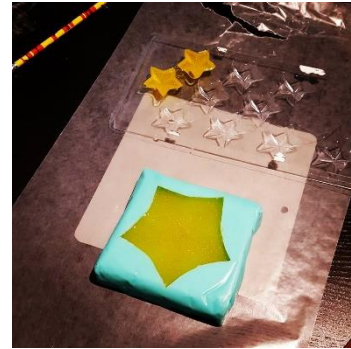


The shoe covers have EVA and Worbla accents covered in vinyl with tiny resin stars. Shoes are completely removable for ease in packing.

# DETAILED BREAKDOWN – RESIN STARS

Stars were made by sculpting, making a silicone mold and casting in resin. Resin is dyed with paint and sparkles. Shoe stars used a candy mold.

Staff star is 2 stars back to back. All stars are encased in craft foam with painted rhinestones. Stars on the shoes are backed with satin and lined with gold beads.



# DETAILED BREAKDOWN - JACKET



Patterns drafted by hand to create bell silhouette ending in petal shapes.

Jacket is made of pleather with vinyl trim, top stitched for seam reinforcement.

Bodice lining is a soft knit to stretch with pleather. Bottom lining is taffeta to match the skirt and maintain “petal” shapes.



Details like studs along the bottom of the jacket, metallic trim on the inside make for fun accents.

Chest piece attached with purse magnets.

Ribbons have a wire frame and interfacing so it's easy to reshape when crushed by a crowd.

# DETAILED BREAKDOWN – SKIRT, PETTICOAT



Petticoat made of soft taffeta, satin ribbon, and tulle – to make sure Lulu looked great when spinning! Over 250 rhinestones appear on the petticoat. Over 10 yards of trim. Petticoat alone took over 30 hours.



120 tubes of satin ribbon and tulle were made, each with 1-3 rhinestones. 60 in green and 60 in white.

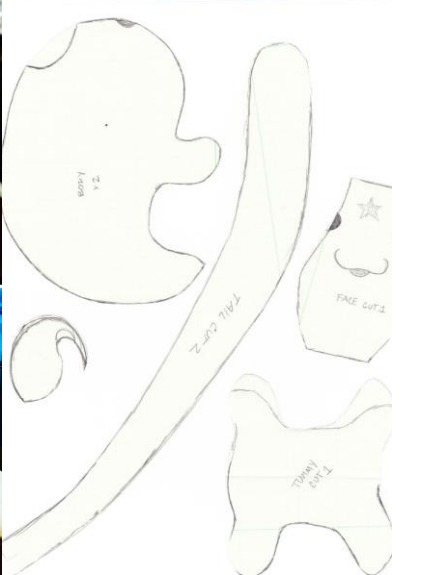
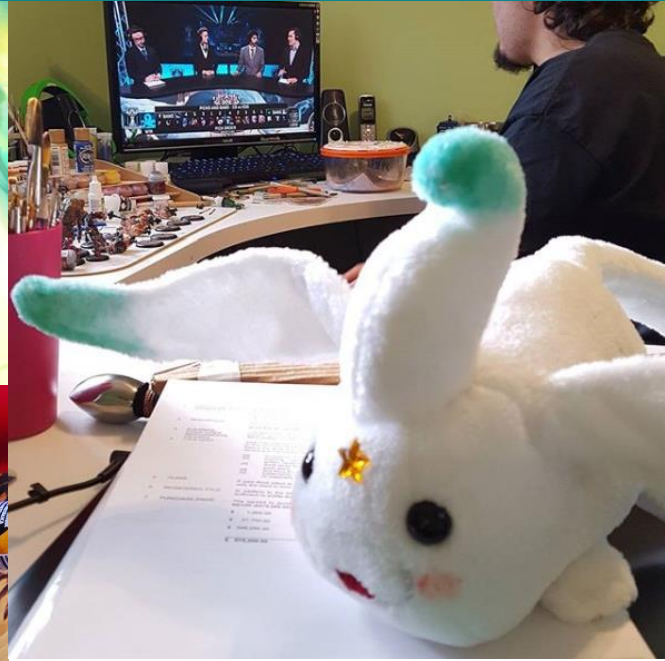


Tubes were mounted onto a taffeta/satin base in alternating colors. White and green/gold trim applied to match the skirt.

Ballet satin with soft pleats to mimic popular pleated skirt interpretation by Sailor Moon cosplayers. Skirt is lined with taffeta and pleats are top-stitched to maintain shape.



# DETAILED BREAKDOWN – PIX PLUSHY



Pix is the first plushy I've ever patterned. It took 7 prototypes before settling on the final design.

Pix is terry-velour, with wiring, hand-embroidery, sharpie coloring, and glass eyes.

# DETAILED BREAKDOWN – WIG & EARS

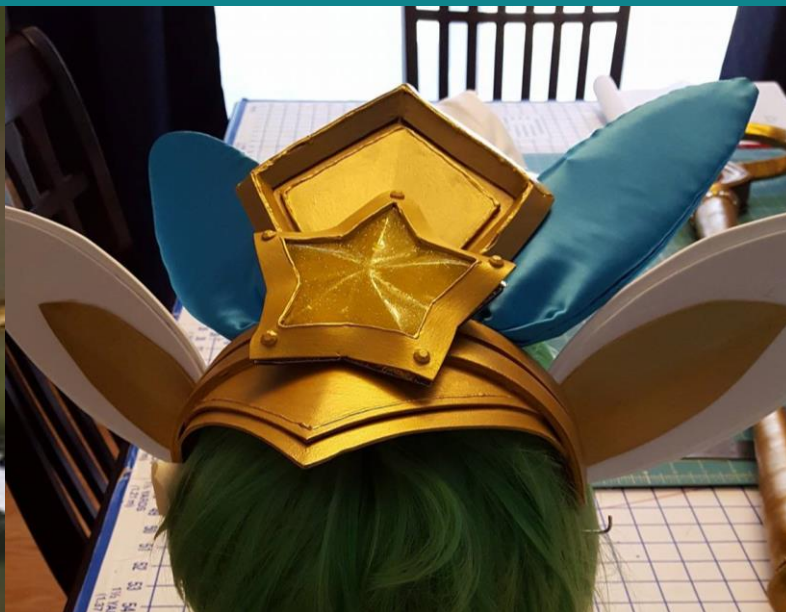


Wig started with an Arda Jaguar as a base and then spliced with a Ferrari for additional volume in the bangs and extra length.

Ears were craft foam base with fake fur attached. Fake fur hand trimmed and shaved for feathering effect. Copic and Sharpie markers used to “dye” the skin and blend fake fur to match wig fibers.



# DETAILED BREAKDOWN - HEADPIECE



Headpiece is made from craft foam, the resin star, and fabric. It is designed to be extremely lightweight and can withstand collisions with doors or other con goers.

White ears are made of foam with a single wire running up the center. Blue ears are satin with interfacing and wire frames for easy reshaping if crushed. The main elements are also craft foam. Details are made with 3D fabric paint and rhinestones.

All gold surfaces are sealed with Modge Podge, painted, and then sealed again with a glossy finish.

# DETAILED BREAKDOWN - STAFF



Staff uses PVC pipe and EVA/craft foam as a base, then covered in Worbla, sprayed with auto-filler for scratch-resistance. Stars and puffs are wire-mounted to withstand forces and easy repair.

Shaded paint layers of brown applied under gold because the gold can be translucent at certain angles. Details like rhinestones carry the sparkling theme from the dress.

# DETAILED BREAKDOWN – CHALLENGES

Costume elements needed to withstand heavy collisions in crowded convention spaces

- Headpiece and chest piece elements are feather-light & flexible (craft foam)
- Tested for collision durability during crafting and wired to bend back into place

Staff needed to withstand robust spinning, twirling, slamming onstage

- Staff base is sealed with auto filler to prevent scratches
- Staff star is suspended with wire running through staff to keep in place

Additional skills I learned for this costume:

1. Sculpting and creating molds
2. Casting and dying resin
3. Using wax paper and ceramic sewing foot to work with vinyl and pleather
4. Patterning a 3D object (Pix), not on a dress form or my own body
5. Wig splicing

# DETAILED ITEM LIST

## Purchased/Modified Items:

- ❖ Ballet flats – worn inside the shoe covers
- ❖ Candy star mold – used to cast 2 tiny stars for the shoes
- ❖ Arda Jaguar, Ferrari wigs – split and re-spliced for the wig
- ❖ Glass animal eyes – used in Pix

## Raw Materials Used in Costume:

- ❖ Muslin, cling film, duct tape – patterns
- ❖ Pleather (2-way and 4-way stretch), various knits, vinyl, taffeta, satin, lace – shirt, shorts, skirt, petticoat, jacket
- ❖ Craft foam, wire, fake-fur, sharpies – headpiece
- ❖ Terrycloth, polyfill - Pix
- ❖ Craft foam, wood putty, crepe paper, Worbla, 3D fabric paint, acrylic paint, auto filler, sealing spray - staff

# EXTRA INFORMATION



## Full disclosure:

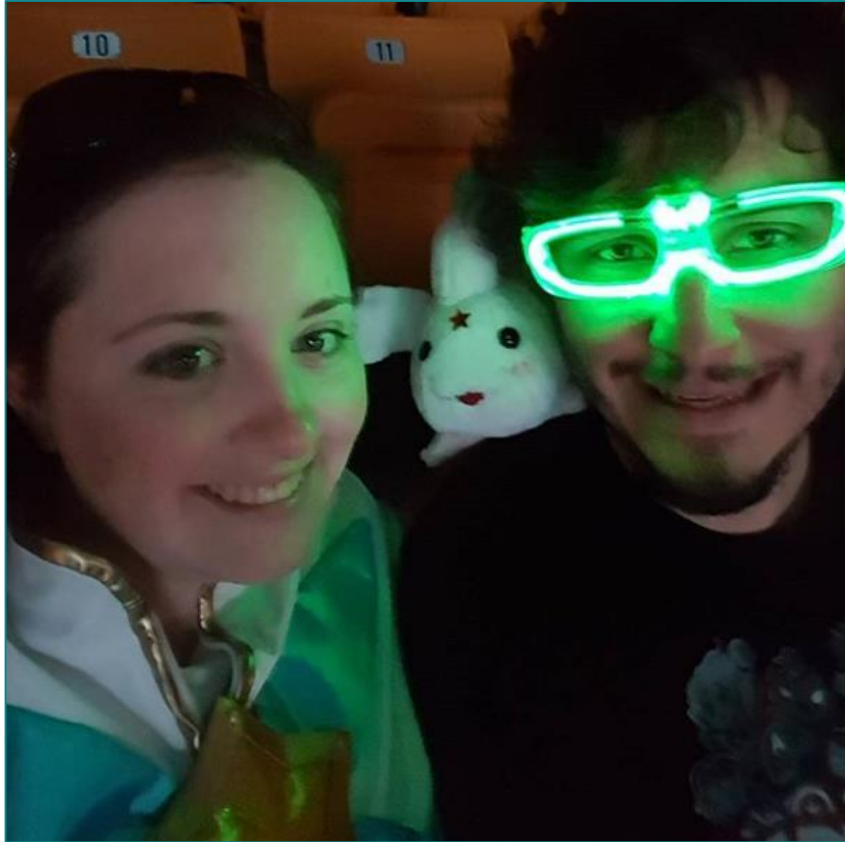
Star Guardian Lulu was entered into a skit contest in 2018 and was awarded Best Master Performance (link to the left).

This contest did not judge the cosplay – there was no craftsmanship judging.

Lulu has not won any major cosplay awards (i.e. Best in Show, First Place etc.)

<https://www.youtube.com/watch?v=bOkEweimegU&feature=youtu.be&t=301>

# THANK YOU!



bigimotik.cosplay



bigimotik.cosplay Pix goes to NALCS finals part 3 #nalcs #nalcsfinals #lolesports #leagueoflegends #boston #tdgarden #champion #leaguecosplay #immortals #imt #teamsolomid #tsm

146w



Liked by indigocastleart and 9

SEPTEMBER 3, 2017

Add a comment...

